

Center Opening Entrances

Offered as Full Entrance Packages or Doors Only

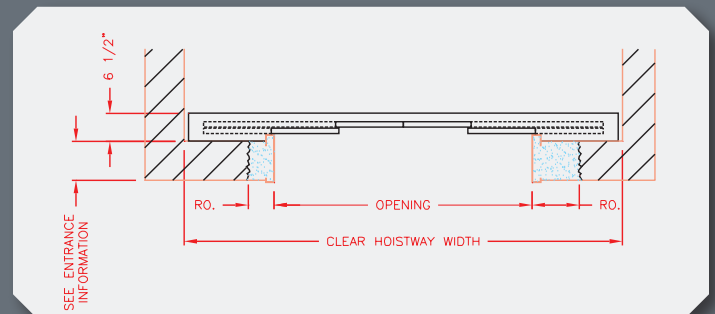
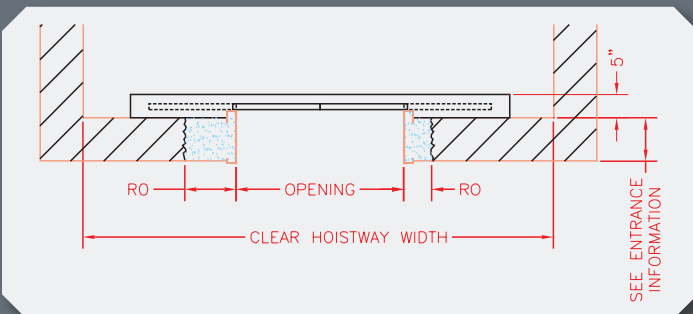


1-Speed Center Opening

Maximum Width 50"
Maximum Height 96"

2-Speed Center Opening

Maximum Width 100"
Maximum Height 96"



Side Opening Entrances

Offered as Full Entrance Packages or Doors Only

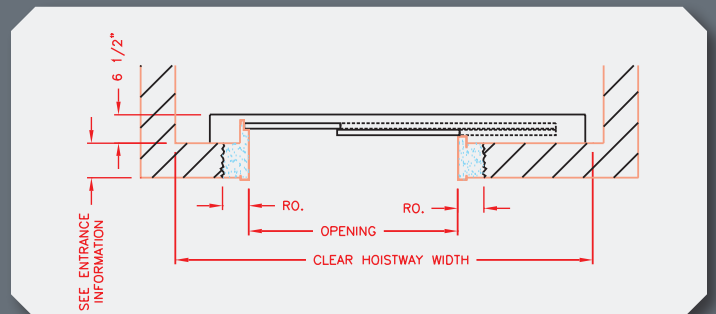
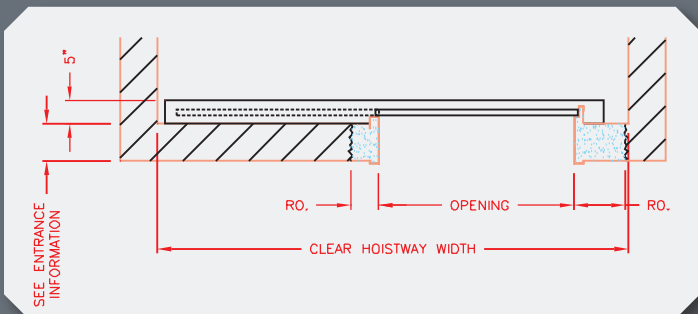


1-Speed Side Opening

Maximum Width 42"
Maximum Height 96"

2-Speed Side Opening

Maximum Width 84"
Maximum Height 96"



INSTALLATION ADVANTAGES



A **Groutless Adjustable Sill Option**
The sill angle brackets can accommodate imperfections in the hoistway allowing quick and easy leveling of the sill. Traditional grouted option available

B **Innovative Mounting Attachments**
Fastening is easy and simple because the fasteners are on the front side of mounting brackets.

C **Universal Opening**
Strike jambs can be reversed for a universal right or left hand fit.

D **Raised Frame Attachment**
Designed with 1/2" clearance, these attachments eliminate the need to chisel away masonry for a correct fit.

E **Compatible with Masonry and Gypsum Walls**
Frames are constructed the same, and mount easily regardless of wall construction material. Mitered and Welded frame options are also available.

GENERAL SPECIFICATIONS FOR ALL ENTRANCES

FRAME

- Bolted Frame or Mitered and Welded Construction

MATERIAL

Painted or stainless frames and doors

SILL - GROUTLESS DESIGN

Loading

Maximum 10,000 class A loading

Maximum 6,000 class C1 loading

Sill Material:

Aluminum (Standard)

Nickel Silver (Optional)

Stainless (Optional)

FRAME CONSTRUCTION

- Bolted construction or mitered and welded
- 16ga. stainless or sheet steel standard
- 14ga. optional
- Accommodates any wall thickness
- UL labeled for Gypsum construction
- 2" wide return, strike, and header perimeter
- Sheet steel is powder painted
- Bolted entrance frames are for either right or left hand use
- For Gypsum wall construction, front of frames attach using frame clips.

STRUT CONSTRUCTION

- 10ga. sheet steel
- Strut extensions may be needed for gypsum construction

SILL SUPPORT CONSTRUCTION

- Groutless design
 - 10,000 class A loading
 - 6,000 class C1 loading
- Grouted design
 - No loading limit
- Fully adjustable for easy leveling
- Sill angles are 7ga. sheet steel with 1/4" wall mounting feet and 10ga. gussets
- 1/2" stud mounting anchors included

HEADER CONSTRUCTION

- 10ga. sheet steel
- Drilled for GAL mounting
(contact MEI for other drilling)

DOOR CONSTRUCTION

- 1.5 hour fire rating UL label
- Doors are right- left-hand specific
- can be drilled to switch
- Standard doors are clad in 20ga. stainless
-16ga. optional
- Painted doors have no cladding
- gloss paint requires sheet steel skin
- Use (2) Nylube slide door guides (gibs) with
(1) 14ga. safety retainer gib (per door panel)
- Drilled for GAL door operator.
(contact MEI for other drilling)
- Sight guard finish matches door finish
- See page 33 for stand alone doors and accessories.

FASCIA CONSTRUCTION

- 14ga. galvanized
- 48" maximum height per section